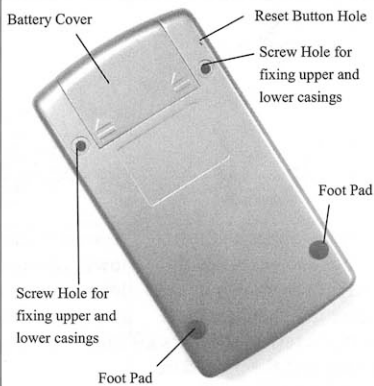
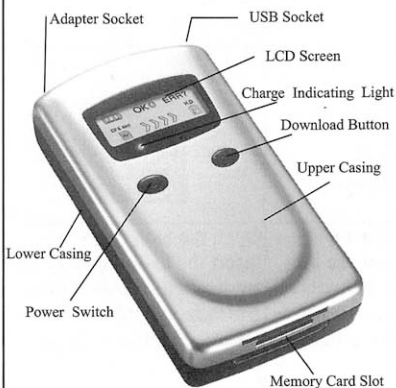
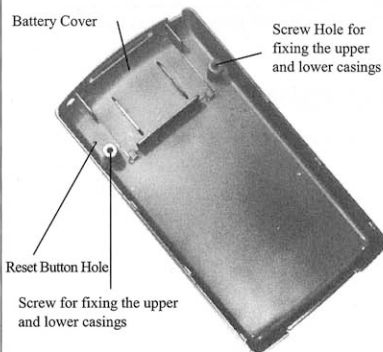
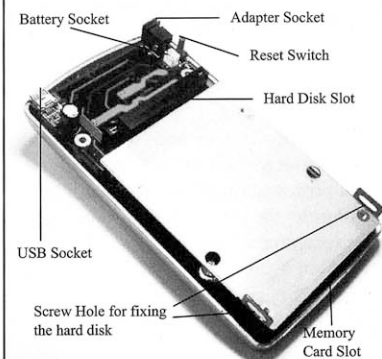
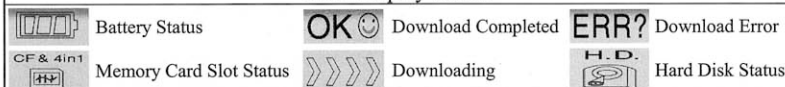


Product Introduction**Appearance of the Structure****Interior of the Structure****LCD Display Screen****Standard Equipment:**

USB Cable, Power Supply Adapter, Li-Ion Battery, Velvet Bag, and Driver Program CD

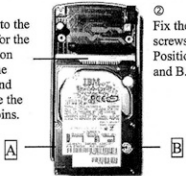
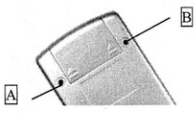
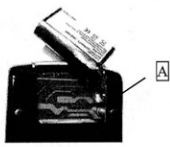
Support System:


Windows 98SE/2000/ME/XP/XP(SP1) and Mac 9.0 or above

Support Memory Card:


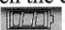

CF stands for CF-I, CF-II, and Micro Drive cards; 4in1 stands for SD, SM, MMC, and MS cards

Assembling

I. Installing 2.5" Hard Disk	II. Assembling External Casing	III. Installing Battery
<p>① Align to the right for the insertion into the slot, and expose the left 4pins.</p>  <p>② Fix the screws at Positions A and B.</p>	<p>Attach the foot pad onto the screw positions A and B.</p> 	<p>Insert the battery connector into Position A.</p> 
<p>Open the upper and lower casings and assemble the hard disk as shown in Figure ①. Then use the shorter screw in the parts kit to carry out the procedure as shown in Figure ②. Attention: We recommend a height of less than 9.5mm for the hard disk.</p>	<p>Assemble the upper and lower casings and use the longer screw in the parts kit to carry out the assembly as shown in the above figure.</p>	<p>Open the battery cover, insert the Li-Ion battery as shown in the above figure and then assemble the battery chamber with the cover.</p>

* Turn on the power, the screen will show  which means the installation is completed.

Instruction Guide

- 1. Power ON/OFF:** Press and hold the power switch for 2~3 seconds to turn on the machine, and then press the power switch again to turn off the power. This product has a power saving function, and if the system is idle for about 1 minute, the system will turn off the power automatically. We recommend that you turn off the power when the system is not in use.
- 2. Charging the Li-Ion battery:** Connect the power supply adapter to the socket to charge the battery. During the battery charging, the charge indicator light will be lit, and  will appear and blink continuously on the screen. The power is fully charged when the charge indicating light is off, and the  no longer blinks. If the power supply adapter is unplugged, a full scale of the  is shown if the power is fully charged. It takes several hours for a full charge. You can use this product as long as the battery is sufficient. Please charge the battery before using it the first time.
- 3. Installing Driver Program:** Please refer to Page. 3.

4. Formatting the Hard Disk
Format the hard disk before using the system the first time. After connecting the USB cable to the computer, you will see 4 additional detachable disks on the screen (as shown in the figure on the right). Click the "USB HDD" to format the disk.



Note 1: Select FAT format for the file system.

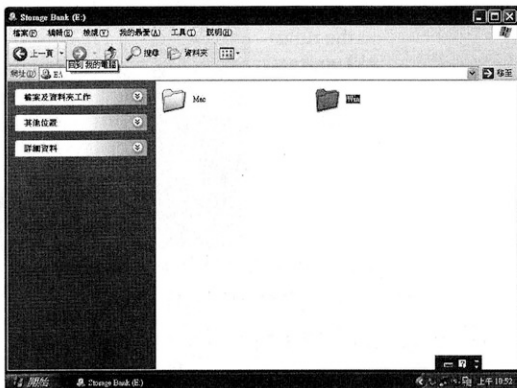
Note 2: The Windows

98SE/ME/2000/XP(SP1) allows users to name the disk, but the Windows XP system does not allow us to name the disk. Therefore, in Windows XP system only 4 devices will appear (For example, Slots G~J will show G~J detachable disks: G:HD ; H:CF ; I:SM ; J:SD/MMC/MS.)

Installing Driver Program

I. Windows 98SE/2000/ME/XP(SP1) :

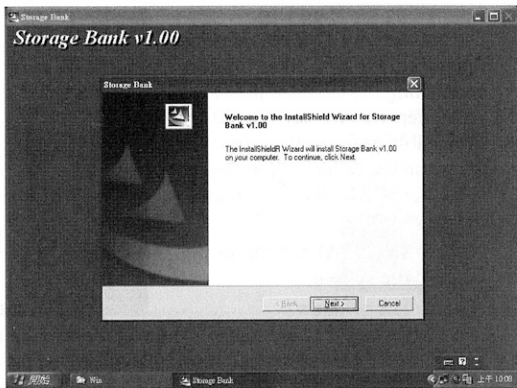
- i. Insert the bundled CD into the CD-ROM, and click the Win folder.



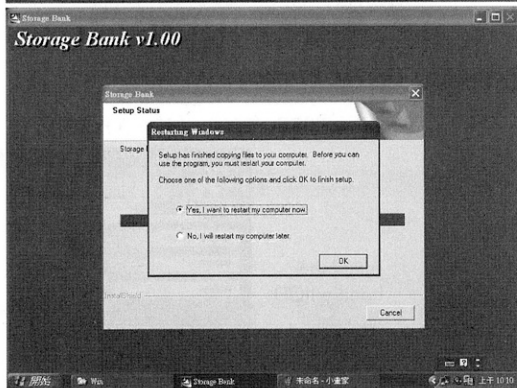
- ii. Click the setup.exe (as shown in the figure on the right)



- iii. The screen (as shown in the figure on the right) will appear. Click "Next".



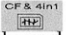
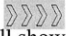
- iv. The screen (as shown in the figure on the right) will appear. Click "OK" to complete the installation.



II. Mac: Please open the Mac folder, and then execute CHRW05F62_200F7IMGSIT.HQX.

5. Operating without linking to PC:

When this product is used by itself, it can download files from a memory card.

After the memory card is inserted,  will appear on the screen. Press the download button to download your file, and  will appear and keep on blinking during the download. The screen will show after the download is completed. If there is any error, the screen will show **ERR?**. If you want to stop the download, please press the download button until the screen shows **ERR?**, and then release the button.

When the data in the memory card is downloaded to the hard disk for each time, the directory will add a new folder with a folder name according the following rules:

CF and Micro Drive cards — CF0001~CF9999

SD and MMC cards — SD0001~SD9999

SM card — SM0001~SM9999

MS card — MS0001~MS9999

6. Operating with linking to PC:

After connecting the USB cable to the computer, you can perform the file management in the disk via the computer. You can read, copy, or delete the file in the memory card and in the hard disk, but the upload and download buttons will not function at that time, and it is unable to download data while you are linking to PC via USB cable. This product has a power saving function, system will be automatically turned off for power saving when USB cable is disconnected.

Q & A

Problem	Handling Procedure
Using the system in DOS, Windows95, and Windows98	Does not support the operating systems mentioned on the left.
Using the system in Linux	Only supports the Linux kernel version 2.4.0 or later versions
Downloadable file format	All file formats supported by memory cards can be downloaded.
All press keys are not working	Press the reset button to reset the system if it is down.
The 4 additional detachable disks as shown in the illustrative diagram do not show up after the system is connected to the computer	<ol style="list-style-type: none"> 1. Confirm if the driver program is installed properly. 2. Press F5 on the keyboard to reset the screen.
Error ERR? occurs during the download	<ol style="list-style-type: none"> 1. Use the disk rearrangement of the computer to check if the file in the memory card is damaged. 2. Check if the capacity of the hard disk is full. If the hard disk is full, clear some files on your own. 3. Check the established folders if the number of folders reaches 9999. If yes, please make arrangement or rename some files. 4. Confirm if the hard disk is installed properly. 5. Check if the memory card is loosened.