

## Formatting of hard disc by using MS VISTA with SWISSKNIFE

The formatting of the hard disc by MS VISTA with the formatting program SWISSKNIFE demands several additional steps which are described as follows.

### 3.4.1 Installing Swissknife

Install the „Swissknife“ program on a computer with a Windows operating system (WIN 2000, ME, XP). The installation is either automatic or after inserting the CD you can activate the program with > Start / Execute / Jobbo / Swissknife / and a double click on „Swissknife.exe“. All the installation queries can be confirmed. The computer may have to be re-started after the installation.

### 3.4.2 Prepare formatting

1. To be on the safe side unplug all connections to external hard disk drives.
2. Connect the GIGA one ultra via the USB cable to the computer and switch it on (ON).
3. Open the „Swissknife“ program as administrator. You can also right-click a program and click "Run as administrator" (fig. 1)
4. The window User Account Control opens. Please press the "Allow" button to continue.



Abb. 1

### 3.4.3 Formatting

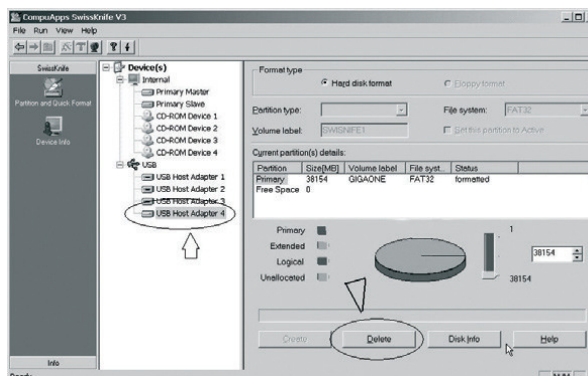
The formatting is done in two steps:

1. Delete data (Delete)
2. Format hard disk (Create)

VISTA User have to follow these four steps:

1. Close program SWISS KNIFE
2. disconnect GIGA ONE or other JOBBO storage device from USB interface
3. connect GIGA ONE once more to the PC
4. start program SWISS KNIFE in administrator mode

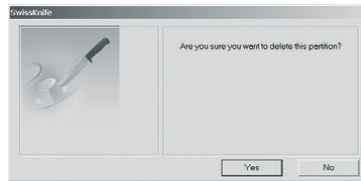
**IMPORTANT: Make sure that during all activities involving the formatting program that the USB area (Devices) for the GIGA ONE ULTRA has been selected. You should under all circumstances avoid going to „Internal“ or „Primary“! Click on „Delete“**





# FOR YOUR BEST IMAGE

The following queries can all be answered in the affirmative > Yes.



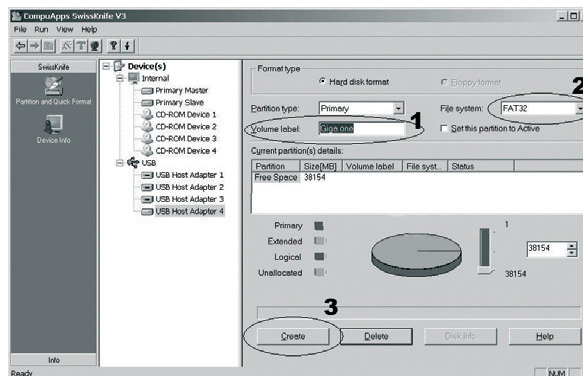
All data on the hard disk is now deleted and you can proceed to re-format.

Important settings for the re-formatting process:

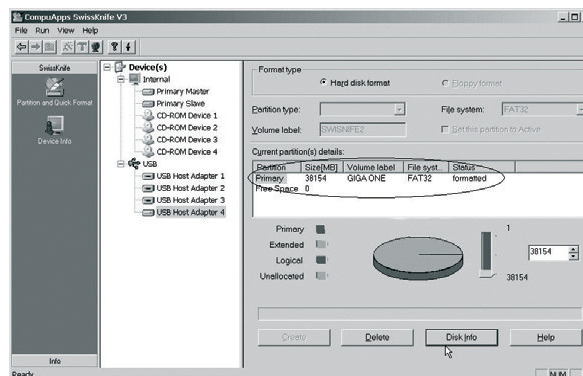
The **File System** must be adjusted to **FAT 32 > 2**

Under **Volume label** enter the name **GIGA one ultra** and this drive description will then also appear in the connection with the computer in the drive structure > **1**

Click on **Create > 3**



This completes the re-formatting of the GIGA one ultra. Under Partition the system will show the available storage space under the drive name (Volume label) **GIGA one ultra**.



The capacity indication in the GIGA one ultra will return to the maximum storage capacity as a result of the re-formatting of the hard disk. .